

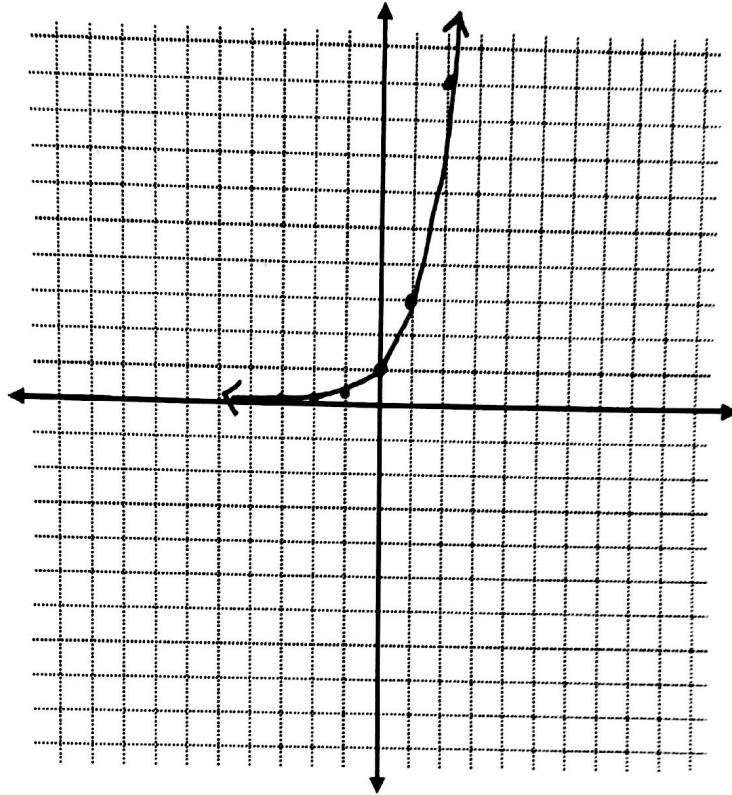
Practice Assignment

Graph the functions. Then state the y-intercept and asymptote.

1.  $f(x) = 3^x$

x	y
-3	.037 $(\frac{1}{27})$
-2	.111 $(\frac{1}{9})$
-1	.333 $(\frac{1}{3})$
0	1
1	3
2	9
3	27

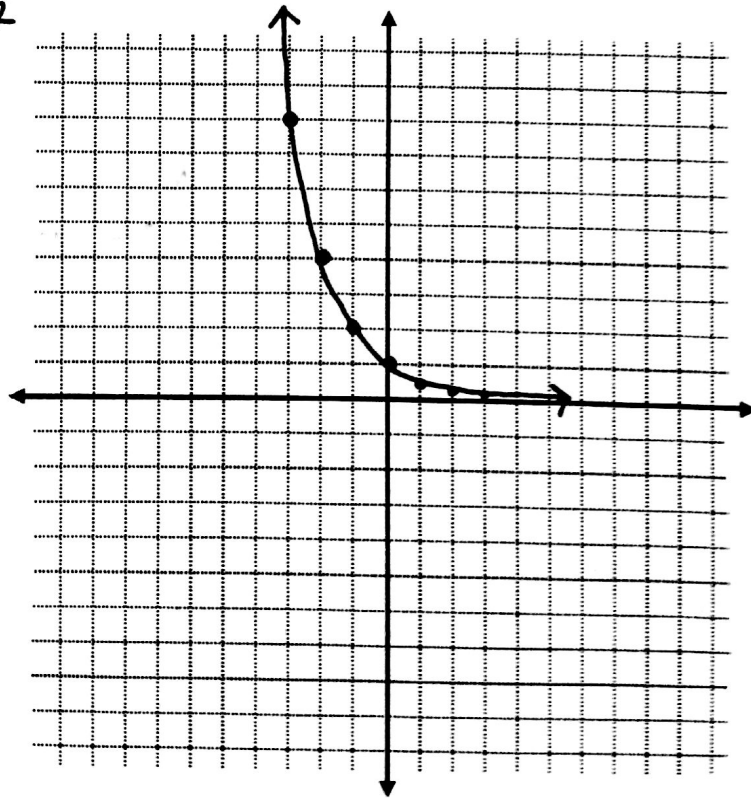
y-intercept:  $(0, 1)$   
 asymptote:  $y = 0$



2.  $f(x) = 0.5^x$   $f(x) = \frac{1}{2}^x$

x	y
-3	8
-2	4
-1	2
0	1
1	.5 $(\frac{1}{2})$
2	.25 $(\frac{1}{4})$
3	.125 $(\frac{1}{8})$

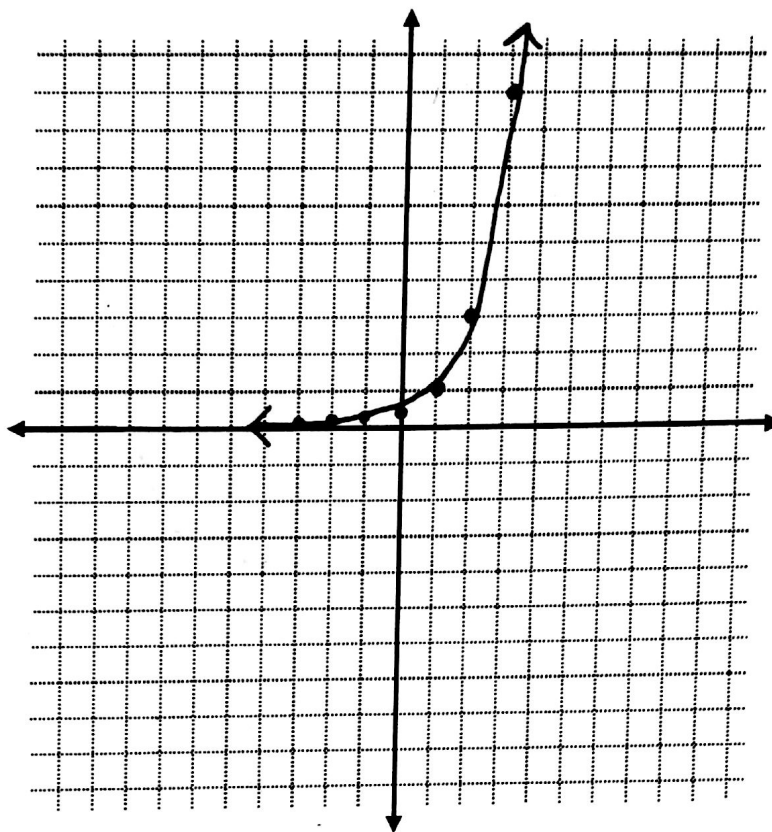
y-intercept:  $(0, 1)$   
 asymptote:  $y = 0$



3.  $f(x) = \frac{1}{3}(3)^x$

x	y	
-3	.012	$(\frac{1}{27})$
-2	.037	$(\frac{1}{27})$
-1	.111	$(\frac{1}{3})$
0	.333	$(\frac{1}{3})$
1	1	
2	3	
3	9	

y-intercept:  $(0, \frac{1}{3})$   
 asymptote:  $y = 0$



4.  $f(x) = 2(\frac{1}{4})^x$

x	y
-3	128
-2	32
-1	8
0	2
1	.5
2	.125
3	.031

y-intercept:  $(0, 2)$   
 asymptote:  $y = 0$

